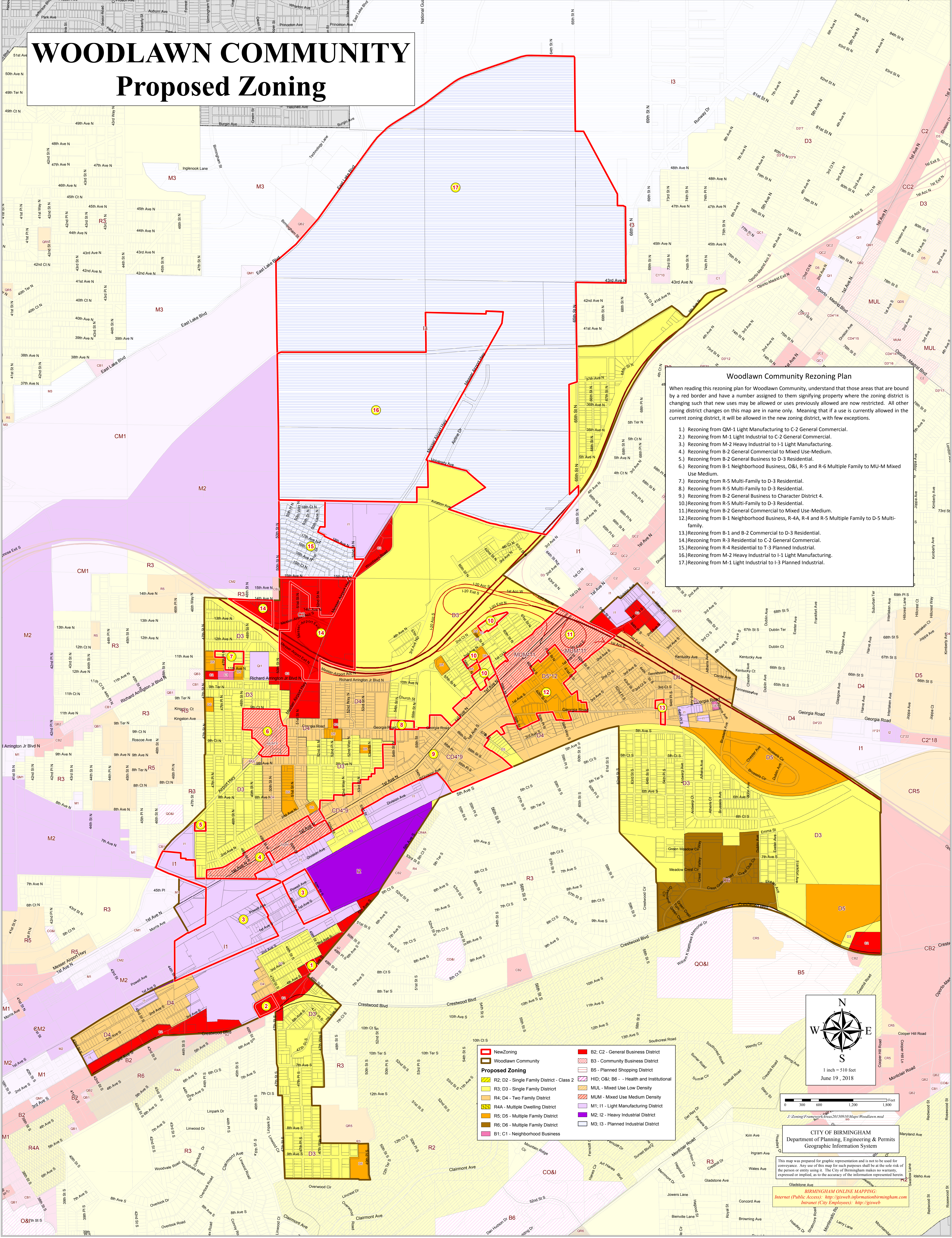


WOODLAWN COMMUNITY Proposed Zoning

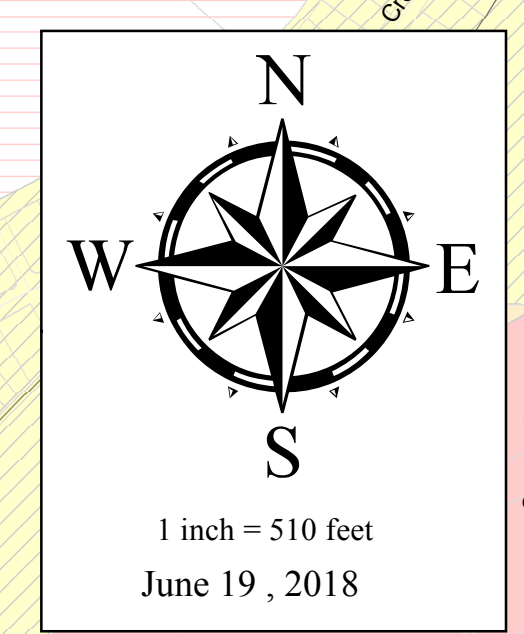


Woodlawn Community Rezoning Plan

When reading this rezoning plan for Woodlawn Community, understand that those areas that are bound by a red border and have a number assigned to them are signifying property where the zoning district is changing such that new uses may be allowed or uses previously allowed are now restricted. All other zoning district changes on this map are in name only. Meaning that if a use is currently allowed in the current zoning district, it will be allowed in the new zoning district, with few exceptions.

- 1.) Rezoning from QM-1 Light Manufacturing to C-2 General Commercial.
- 2.) Rezoning from M-1 Light Industrial to C-2 General Commercial.
- 3.) Rezoning from M-2 Heavy Industrial to I-1 Light Manufacturing.
- 4.) Rezoning from B-2 General Commercial to Mixed Use-Medium.
- 5.) Rezoning from B-2 General Business to D-3 Residential.
- 6.) Rezoning from B-1 Neighborhood Business, OB1, R-5 and R-6 Multiple Family to MU-M Mixed Use Medium.
- 7.) Rezoning from R-5 Multi-Family to D-3 Residential.
- 8.) Rezoning from R-5 Multi-Family to D-3 Residential.
- 9.) Rezoning from B-2 General Business to Character District 4.
- 10.) Rezoning from R-5 Multi-Family to D-3 Residential.
- 11.) Rezoning from B-2 General Commercial to Mixed Use-Medium.
- 12.) Rezoning from B-1 Neighborhood Business, R-4A, R-4 and R-5 Multiple Family to D-5 Multi-family.
- 13.) Rezoning from B-1 and B-2 Commercial to D-3 Residential.
- 14.) Rezoning from R-3 Residential to C-2 General Commercial.
- 15.) Rezoning from R-4 Residential to T-3 Planned Industrial.
- 16.) Rezoning from M-2 Heavy Industrial to I-1 Light Manufacturing.
- 17.) Rezoning from M-1 Light Industrial to I-3 Planned Industrial.

New Zoning	B2, C2 - General Business District
Woodlawn Community	B3 - Community Business District
R2, D2 - Single Family District - Class 2	B5 - Planned Shopping District
R3, D3 - Single Family District	HID, O&I, B6 - Health and Institutional
R4, D4 - Two Family District	MUL - Mixed Use Low Density
R4A - Multiple Dwelling District	MUM - Mixed Use Medium Density
R5, D5 - Multiple Family District	M1, I1 - Light Manufacturing District
R6, D6 - Multiple Family District	M2, I2 - Heavy Industrial District
B1, C1 - Neighborhood Business	M3, I3 - Planned Industrial District



CITY OF BIRMINGHAM
Department of Planning, Engineering & Permits
Geographic Information System

This map was prepared for graphic representation and is not to be used for conveyance. Any use of this map for such purposes shall be at the sole risk of the person or entity using it. The City of Birmingham makes no warranty, expressed or implied, as to the accuracy of the information represented herein.

BIRMINGHAM ONLINE MAPPING:
Internet (Public Access): <http://gisweb.informationbirmingham.com>
Intranet (City Employees): <http://gisweb>