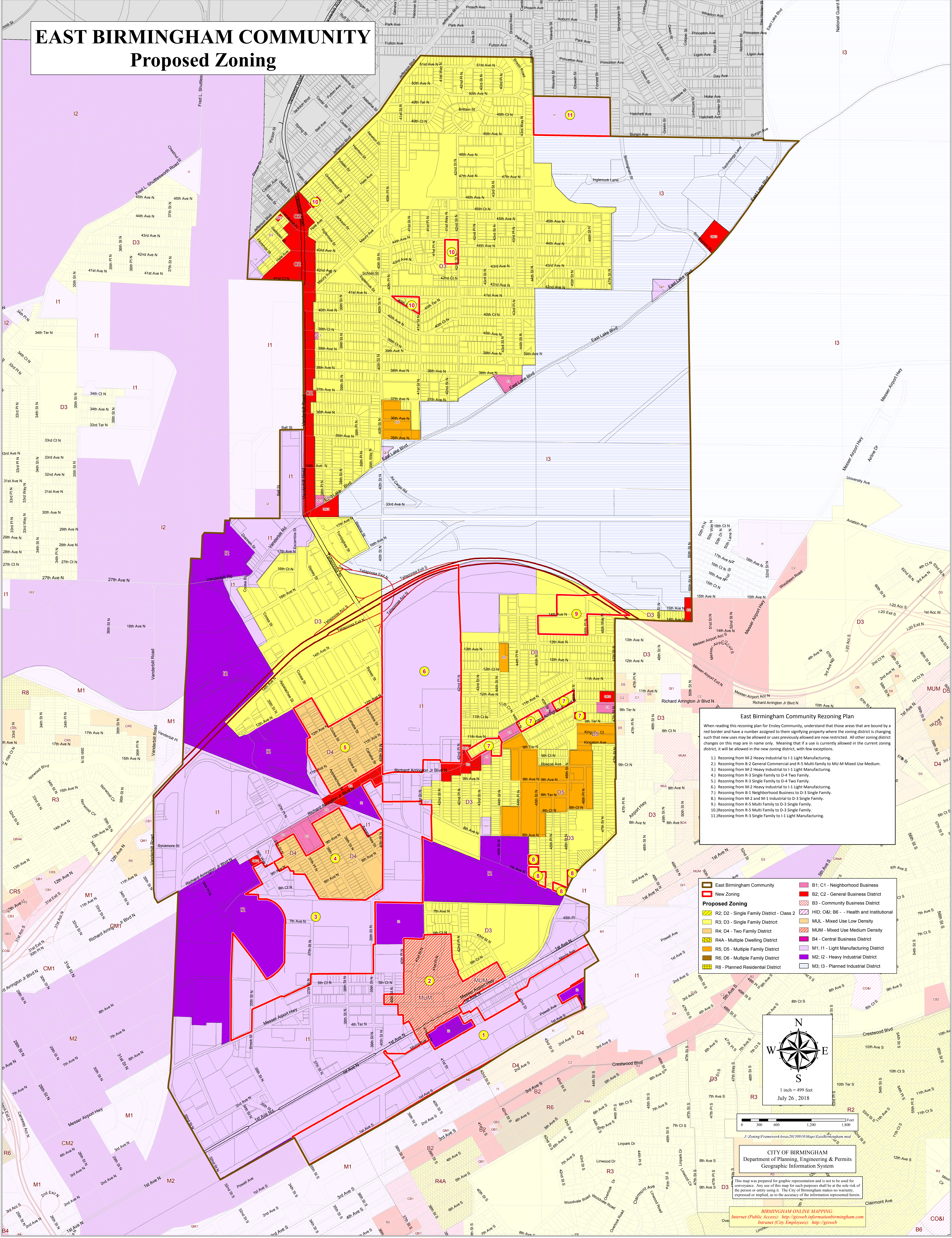


# EAST BIRMINGHAM COMMUNITY Proposed Zoning

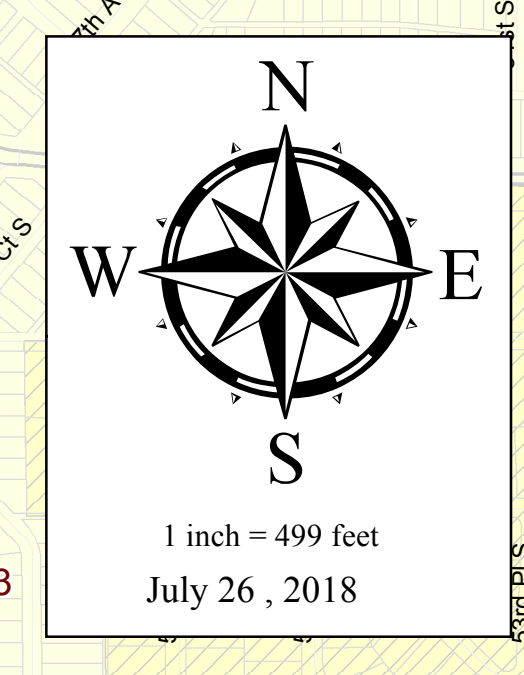


**East Birmingham Community Rezoning Plan**

When reading this rezoning plan for Enley Community, understand that those areas that are bound by a red border and have a number assigned to them signifying property where the zoning district is changing such that new uses may be allowed or uses previously allowed are now restricted. All other zoning district changes on this map are in name only. Meaning that if a use is currently allowed in the current zoning district, it will be allowed in the new zoning district, with few exceptions.

- 1) Rezoning from M-2 Heavy Industrial to I-1 Light Manufacturing.
- 2) Rezoning from B-2 General Commercial and R-5 Multi-Family to MU-M Mixed Use Medium.
- 3) Rezoning from M-2 Heavy Industrial to I-1 Light Manufacturing.
- 4) Rezoning from R-3 Single Family to D-4 Two Family.
- 5) Rezoning from R-3 Single Family to D-4 Two Family.
- 6) Rezoning from M-2 Heavy Industrial to I-1 Light Manufacturing.
- 7) Rezoning from B-1 Neighborhood Business to D-3 Single Family.
- 8) Rezoning from M-2 and M-1 Industrial to D-3 Single Family.
- 9) Rezoning from R-5 Multi Family to D-3 Single Family.
- 10) Rezoning from R-5 Multi Family to D-3 Single Family.
- 11) Rezoning from R-3 Single Family to I-1 Light Manufacturing.

East Birmingham Community	B1; C1 - Neighborhood Business
New Zoning	B2; C2 - General Business District
R2; D2 - Single Family District - Class 2	B3 - Community Business District
R3; D3 - Single Family District	HID; O&I; B6 - Health and Institutional
R4; D4 - Two Family District	MUL - Mixed Use Low Density
R4A - Multiple Dwelling District	MUM - Mixed Use Medium Density
R5; D5 - Multiple Family District	B4 - Central Business District
R6; D6 - Multiple Family District	M1; I1 - Light Manufacturing District
R8 - Planned Residential District	M2; I2 - Heavy Industrial District
	M3; I3 - Planned Industrial District



0 300 600 1,200 1,800  
Feet

**CITY OF BIRMINGHAM**  
Department of Planning, Engineering & Permits  
Geographic Information System

This map was prepared for graphic representation and is not to be used for any purpose. Any use of this map for such purposes shall be at the sole risk of the person or entity using it. The City of Birmingham makes no warranty, expressed or implied, as to the accuracy of the information represented herein.

**BIRMINGHAM ONLINE MAPPING:**  
Internet (Public Access): <http://gisweb.informationbirmingham.com>  
Intranet (City Employees): <http://gisweb>