

**North Birmingham Community Rezoning Plan**

When reading this rezoning plan for West End Community, understand that those areas that are bound by a red boundary have a number assigned to them signifying property where the zoning district is changing such that new uses may be allowed or uses previously allowed are now restricted. All other zoning district changes on this map are in name only. Meaning that if a use is currently allowed in the current zoning district, it will be allowed in the new zoning district, with few exceptions.

- 1.) Rezoning from M-4 Mining and Lumbering District to AG Agricultural District.
- 2.) Rezoning from M-4 Mining and Lumbering District to I-1 Light Industrial District.
- 3.) Rezoning from M-4 Mining and Lumbering District to I-1 Light Industrial District.
- 4.) Rezoning from A-1 Agricultural District to I-4 Mining, Landfill and Timbering Industrial District.
- 5.) Rezoning from M-2 Heavy Industrial District to I-1 Light Industrial District.
- 6.) Rezoning from M-2 Heavy Industrial District to I-1 Light Industrial District.
- 7.) Rezoning from M-2 Heavy Industrial District to I-1 Light Industrial District.
- 8.) Rezoning from R-3 Single Family, B-1 Neighborhood Business, B-2 General Business, B-3 Community Business, and M-1 Light Industrial Districts to MU-M Mixed Use Medium Density.
- 9.) Rezoning from M-2 Heavy Industrial District to I-1 Light Industrial District.
- 10.) Rezoning from R-4 Two Family District to C-2 General Business District.
- 11.) Rezoning from R-3 Single Family, R-4 Two Family, R-4A Medium Density Residential, B-1 Neighborhood Business, B-2 General Business Districts to MU-L Mixed Use Low Density.
- 12.) Rezoning from M-2 Heavy Industrial District to I-1 Light Industrial District.
- 13.) Rezoning from R-5 Multi Family District to D-3 Single Family District.
- 14.) Rezoning from M-1 Light Industrial and M-2 Heavy Industrial Districts to D-5 Multi Family District.
- 15.) Rezoning from R-3 Single Family, R-6 Multi Family, Q8 Office and Institutional, B-1 Neighborhood Business, and B-2 General Business Districts to MU-L Mixed Use Low Density.
- 16.) Rezoning from R-3 Single Family District and B-1 Neighborhood Business District to C-2 General Business District.
- 17.) Rezoning from M-2 Heavy Industrial District to I-1 Light Industrial District.
- 18.) Rezoning from R-6, CR-6 Multi Family District to D-3 Single Family District.

# NORTH BIRMINGHAM COMMUNITY REZONING Case ZAC2016-00009

New Zoning	AG - Agricultural Class 1
D1 - Single Family District - Class 1	I2 - Light Manufacturing District
D2 - Single Family District - Class 2	I3 - Planned Industrial District
D3 - Single Family District	I4 - Special Mining & Lumbering District
D4 - Two Family District	AG - Agricultural Class 1
D5 - Multiple Family District	NA - Newly Annexed
D6 - Planned Residential District	CO - County Zoning
C1 - Neighborhood Business	OUT
C2 - General Business District	North Birmingham Community
HID - Health and Institutional	
MUL - Mixed Use Low Density	
MUM - Mixed Use Medium Density	
MUH - Mixed Use High Density	
MUD - Mixed Use Downtown	
MXD - Mixed Development	
PRD - Planned Recreation	

North Birmingham Rezoning ZAC2016-00009

QC2'9 "Q" conditions can be found in file for Ordinance No. 1751-G (ZAC2002-00056)

QI1'14 "Q" conditions can be found in file for Ordinance No. 1718-G (ZAC2001-00134)

QI1'15 "Q" conditions can be found in file for Ordinance No. 1859-G (ZAC2008-00083)

QI1'15 "Q" conditions can be found in file for Ordinance No. 1859-G (ZAC2008-00083)

QI2'17 "Q" conditions can be found in file for Ordinance No. 1467-G (Z-24-91)

QI1'18 "Q" conditions can be found in file for Ordinance No. 1471-G (Z-5-92)

QI2'1 "Q" conditions can be found in file for Ordinance No. 1448-G (Z-27-90)

QI1'12 "Q" conditions can be found in file for Ordinance No. 1640-G (Z-12-98)

QC1'13 "Q" conditions can be found in file for Ordinance No. 1459-G (Z-14-91)

QC1'14 "Q" conditions can be found in file for Ordinance No. 1663-G (Z-3-99)

QC2'5 "Q" conditions can be found in file for Ordinance No. 1553-G (Z-36-95)

QC2'6 "Q" conditions can be found in file for Ordinance No. 1555-G (Z-36-95)

QC2'7 "Q" conditions can be found in file for Ordinance No. 1421-G (Z-40-89)

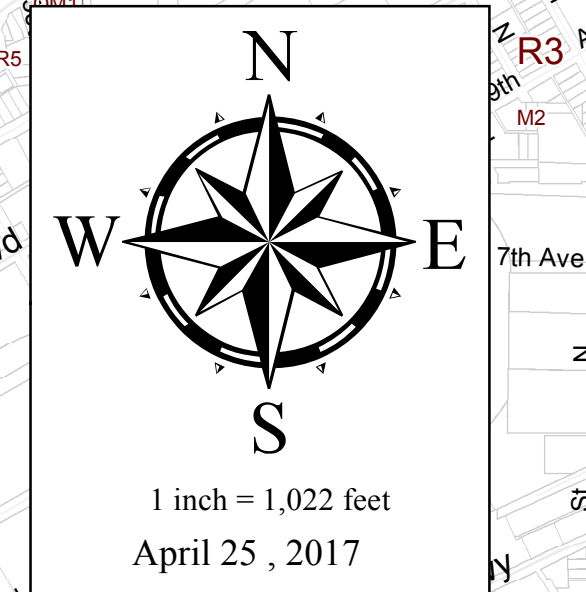
QC2'8 "Q" conditions can be found in file for Ordinance No. 1353-G (Z-7-88)

QI1'10 "Q" conditions can be found in file for Ordinance No. 1550-G (Z-27-93)

QC2'11 "Q" conditions can be found in file for Ordinance No. 1587-G (Z-24-96)

QC2'12 "Q" conditions can be found in file for Ordinance No. 1931-G (ZAC2013-00009)

QI2'13 "Q" conditions exclude the following uses: Scrap yard and Junk Yard



**CITY OF BIRMINGHAM**  
Department of Planning, Engineering & Permits  
Geographic Information System

This map was prepared for graphic representation and is not to be used for conveyance. Any use of this map for such purposes shall be at the sole risk of the person or entity using it. The City of Birmingham makes no warranty, expressed or implied, as to the accuracy of the information represented herein.

**BIRMINGHAM ONLINE MAPPING:**  
Internet (Public Access): <http://gisweb.information.birmingham.com>  
Intranet (City Employees): <http://gisweb>