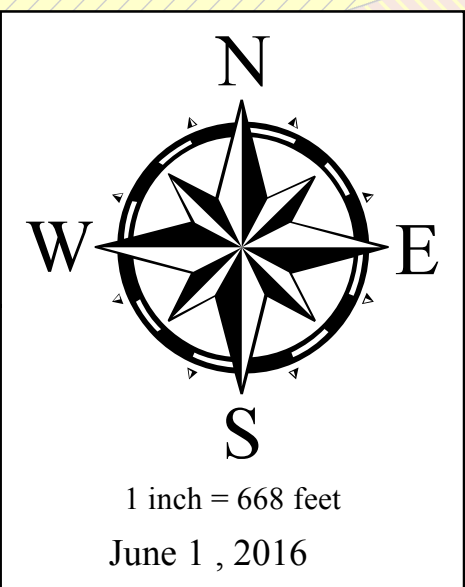
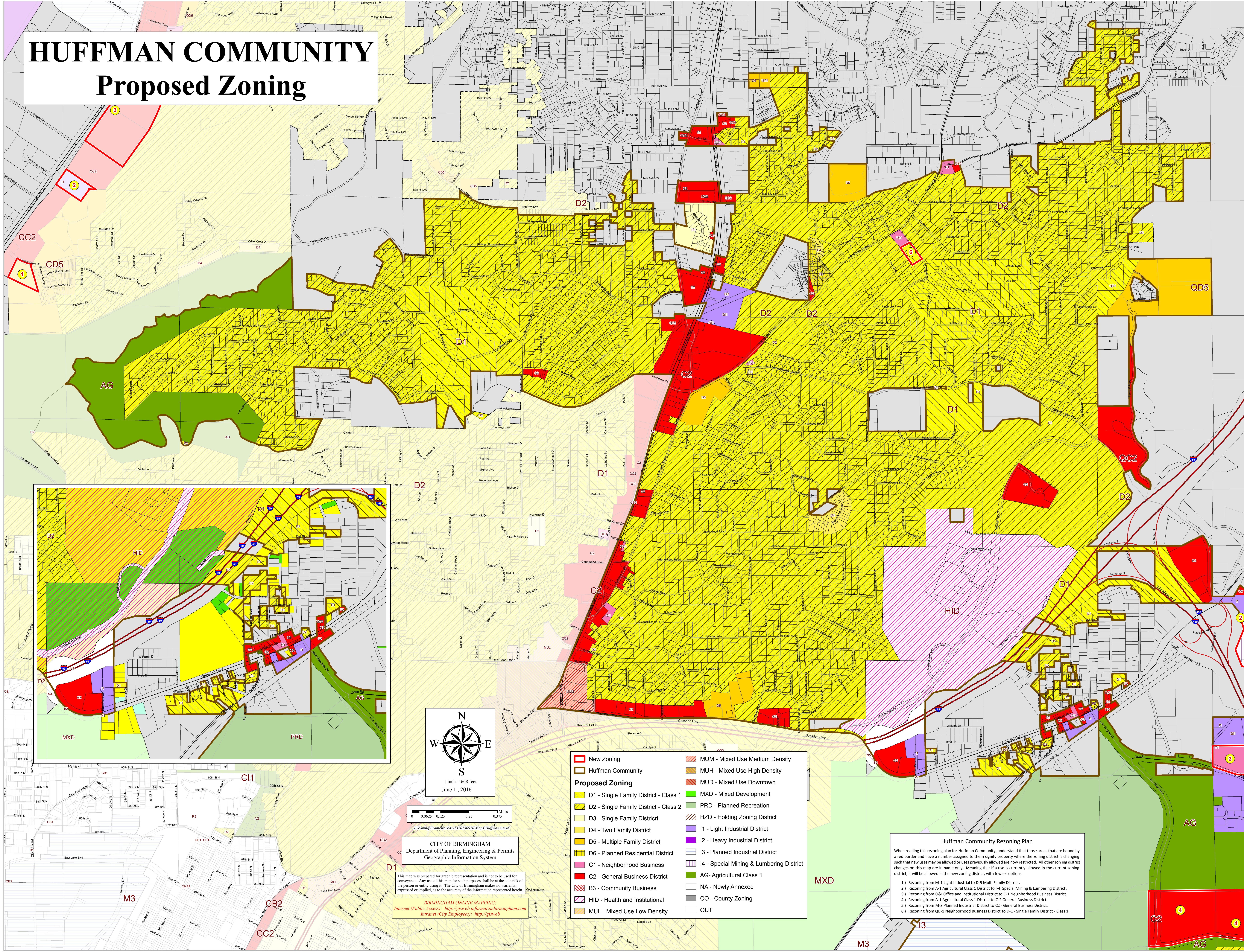


HUFFMAN COMMUNITY

Proposed Zoning



1:Zoning\Framework\area\20150910\Map\Huffman_A.mxd

CITY OF BIRMINGHAM
Department of Planning, Engineering & Permits
Geographic Information System

This map was prepared for graphic representation and is not to be used for conveyance. Any use of this map for such purposes shall be at the sole risk of the person or entity using it. The City of Birmingham makes no warranty, expressed or implied, as to the accuracy of the information represented herein.

BIRMINGHAM ONLINE MAPPING:
Internet (Public Access): <http://gisweb.informationbirmingham.com>
Intranet (City Employees): <http://gisweb>

New Zoning	MUM - Mixed Use Medium Density
Huffman Community	MUH - Mixed Use High Density
Proposed Zoning	MUD - Mixed Use Downtown
D1 - Single Family District - Class 1	MXD - Mixed Development
D2 - Single Family District - Class 2	PRD - Planned Recreation
D3 - Single Family District	HZD - Holding Zoning District
D4 - Two Family District	I1 - Light Industrial District
D5 - Multiple Family District	I2 - Heavy Industrial District
D6 - Planned Residential District	I3 - Planned Industrial District
C1 - Neighborhood Business	I4 - Special Mining & Lumbering District
C2 - General Business District	AG - Agricultural Class 1
B3 - Community Business	NA - Newly Annexed
HID - Health and Institutional	CO - County Zoning
MUL - Mixed Use Low Density	OUT

Huffman Community Rezoning Plan

When reading this rezoning plan for Huffman Community, understand that those areas that are bound by a red border and have a number assigned to them signify property where the zoning district is changing such that new uses may be allowed or uses previously allowed are now restricted. All other zoning district changes on this map are in name only. Meaning that if a use is currently allowed in the current zoning district, it will be allowed in the new zoning district, with few exceptions.

- 1.) Rezoning from M-1 Light Industrial to D-5 Multi Family District.
- 2.) Rezoning from A-1 Agricultural Class 1 District to I-4 Special Mining & Lumbering District.
- 3.) Rezoning from O&I Office and Institutional District to C-1 Neighborhood Business District.
- 4.) Rezoning from A-1 Agricultural Class 1 District to C-2 General Business District.
- 5.) Rezoning from M-3 Planned Industrial District to C-2 - General Business District.
- 6.) Rezoning from Q&R-1 Neighborhood Business District to D-1 - Single Family District - Class 1.