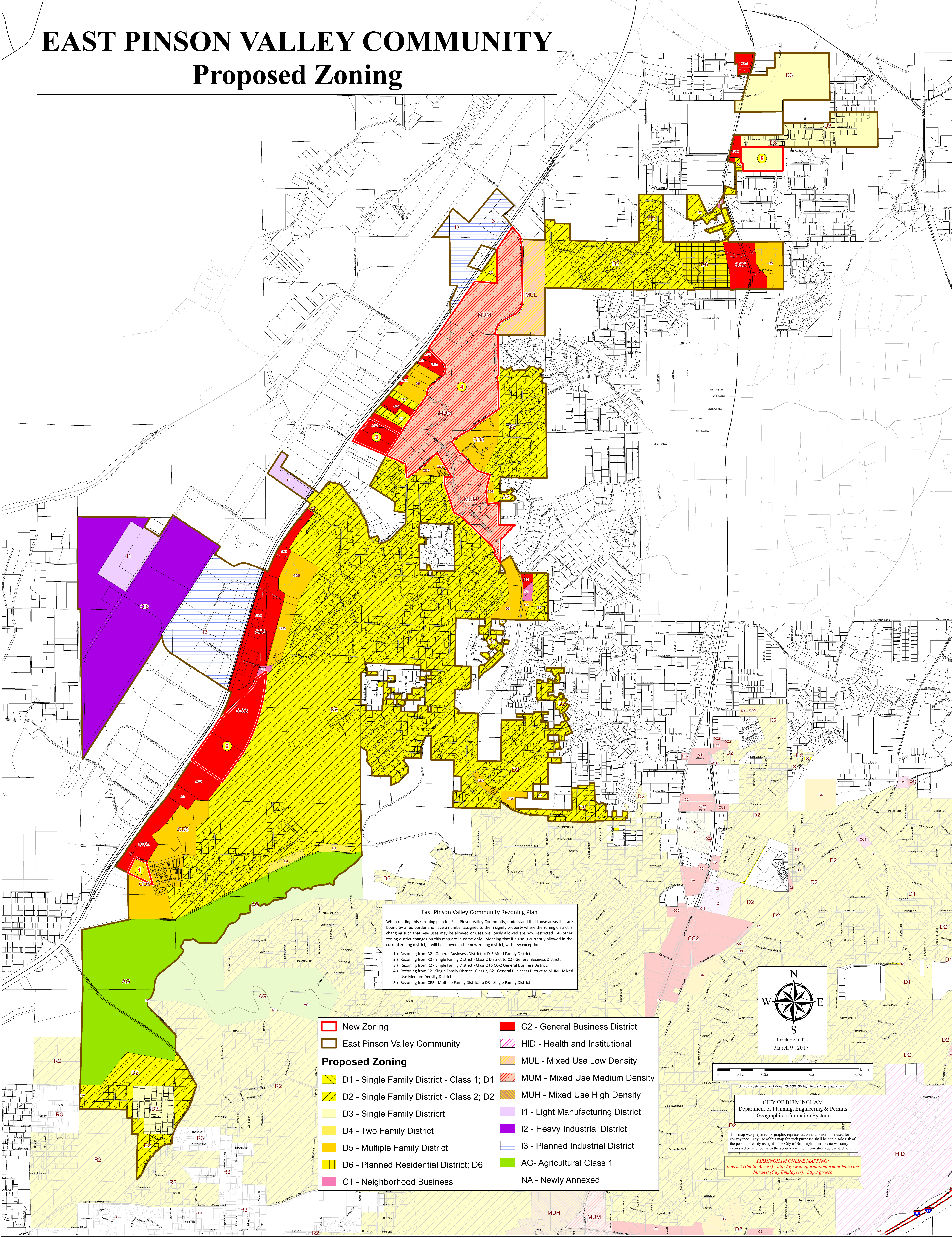


# EAST PINSON VALLEY COMMUNITY

## Proposed Zoning

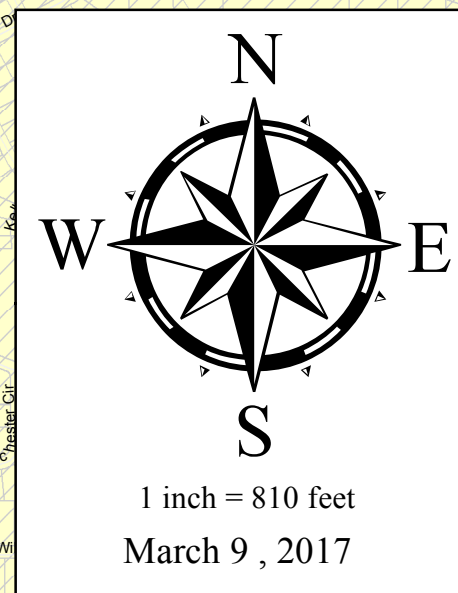


**East Pinson Valley Community Rezoning Plan**

When reading this rezoning plan for East Pinson Valley Community, understand that those areas that are bound by a red border and have a number assigned to them signify property where the zoning district is changing such that new uses may be allowed or uses previously allowed are now restricted. All other zoning district changes on this map are in name only. Meaning that if a use is currently allowed in the current zoning district, it will be allowed in the new zoning district, with few exceptions.

- 1.) Rezoning from B2 - General Business District to D-5 Multi Family District.
- 2.) Rezoning from R2 - Single Family District - Class 2 District to C2 - General Business District.
- 3.) Rezoning from R2 - Single Family District - Class 2 to CC-2 General Business District.
- 4.) Rezoning from R2 - Single Family District - Class 2, D2 - General Business District to MUM - Mixed Use Medium Density District.
- 5.) Rezoning from CR5 - Multiple Family District to D3 - Single Family District.

New Zoning	C2 - General Business District
East Pinson Valley Community	HID - Health and Institutional
<b>Proposed Zoning</b>	MUL - Mixed Use Low Density
D1 - Single Family District - Class 1; D1	MUM - Mixed Use Medium Density
D2 - Single Family District - Class 2; D2	MUH - Mixed Use High Density
D3 - Single Family District	I1 - Light Manufacturing District
D4 - Two Family District	I2 - Heavy Industrial District
D5 - Multiple Family District	I3 - Planned Industrial District
D6 - Planned Residential District; D6	AG - Agricultural Class 1
C1 - Neighborhood Business	NA - Newly Annexed



J:\Zoning Framework\Areas\20150910\Map\EastPinsonValley.mxd

**CITY OF BIRMINGHAM**  
 Department of Planning, Engineering & Permits  
 Geographic Information System

This map was prepared for graphic representation and is not to be used for conveyance. Any use of this map for such purposes shall be at the sole risk of the person or entity using it. The City of Birmingham makes no warranty, expressed or implied, as to the accuracy of the information represented herein.

**BIRMINGHAM ONLINE MAPPING:**  
 Internet (Public Access): <http://gisweb.informationbirmingham.com>  
 Intranet (City Employees): <http://gisweb>