

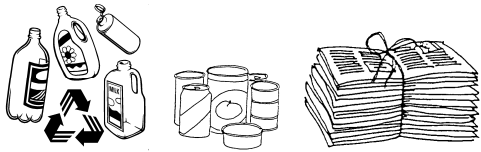
The Ground Rules

PLACEMENT OF YOUR CONTAINER

Place your recycling bin or brown paper bag at curbside by 6:00 a.m. on your assigned collection day. Your recycling container should be placed within two (2) feet of the curblin and t least five (5) feet from obstructions such as mailboxes, fences, lampposts or parked vehicle for proper collection. Containers should not be placed under low hanging limbs or wires. A fifteen (15) foot overhead clearance is needed for proper service. All containers should be removed from the curb within 12 hours of collection service.

Any Questions?

If you have any questions on proper procedures or any suggestions, please feel free to call the Birmingham Recycles Hotline, at 254-6314, M-F, 7:00 a.m. to 6:00 p.m.



By participating in Birmingham Recycles, you will help us turn trash into treasure



Recycling saves Btu's of energy, Kilowatt hours, gas usage, and water usage. Recycling one aluminum can saves enough energy to keep a 100-Watt bulb burning for almost 4 hours or run your television for 3 hours. So be a partner in our city's progress. Join *Birmingham Recycles!*, and let's make a clean start.

Recycling clipart provided by Wisconsin Department of Natural Resources

WELCOME
TO
BIRMINGHAM
RECYCLES!



"THE EASIEST RECYCLING PROGRAM UNDER THE SUN"

GUIDE
TO
WEDNESDAY
RECYCLING



CITY OF BIRMINGHAM
DEPARTMENT OF PUBLIC WORKS
SOLID WASTE DIVISION – RECYCLING
(205) 254-6314

www.informationbirmingham.com

What Can I Recycle?

We accept plastic bottles with narrow, threaded necks, cardboard, mixed paper, newspaper, aluminum cans and steel cans. Proper preparation of these materials is shown in this guide. Please follow the directions to avoid having your recyclables rejected

Plastics

Plastics are recyclable. You'll find codes on the bottom or side panels of most bottles

PETE 

HDPE 



Examples Of Acceptable PETE Plastics

PETE 

- ♣ Soda/soft drink bottles
- ♣ Peanut butter containers
- ♣ Salad dressing/
vegetable oil bottles
- ♣ Wine/beer/liquor bottles

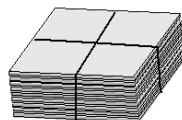
Examples Of Acceptable HDPE Plastics

HDPE 

- ♣ Milk jugs (clear & colored)
- ♣ Cleaning solution containers (clear & colored)
- ♣ Water /juice bottles (clear only)

All containers must be clean and dry. Plastic bags are not acceptable. Labels do not need to be removed.

Cardboard (Flattened) and Mixed Paper



Flattened cardboard includes cereal boxes and similar containers that can fit into the recycling bin or paper bag.

Mixed paper includes junk mail, office paper (shredded), catalogs, magazines, telephone directories, and books.



Newspapers

All newspapers and tabloids printed on Newsprint .

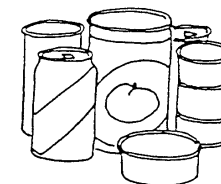
Examples are:

- ♣ Daily newspapers
- ♣ National tabloids
- ♣ Local tabloids



All newspapers must be dry and bundled in brown paper bags

Aluminum and Steel Cans



All steel (tin) beverage and food cans. Examples include soup, fruit, vegetable, juice and pet food cans are accepted. Empty aerosol cans are accepted.

All Cans must be clean and dry. Discard detached steel can lids

Do Not Recycle:

Birmingham Recycles does not accept the following materials:

- ♣ Plastic bags
- ♣ Foam Products
- ♣ Pottery
- ♣ Glass
- ♣ Any Paper
Paper Used For
Body Contact
- ♣ Wrapping paper
- ♣ Tissue
- ♣ Paper Towels
- ♣ Light Bulbs
- ♣ Cellophane